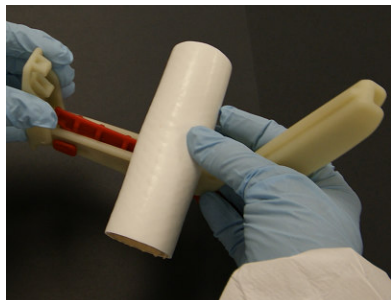


HWC - Quick Start Guide To Close Clamp

The **HWC** (Heavy Wall Clamp) can be used to stop flow of liquids or gases in any flexible tubing. The range of the clamp is **1/16" – 1/8"** wall tubing (**White Gate**) and **1/8" – 1/4"** wall tubing (**Red Gate**). The clamp will accommodate up to 2" OD.

Assembly instructions for the HWC:



1. Proper position to load the tubing into Clamp



2. Rotate the **Lower-Member** into first hook of **Locking-Link**



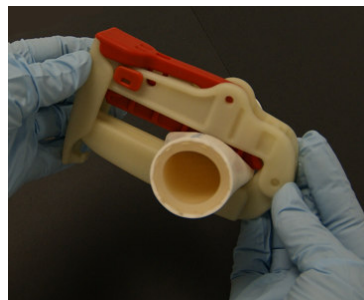
3. Push the **Locking-Link** forward and allow to latch



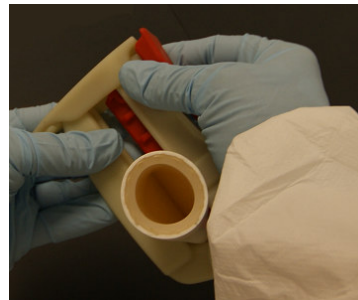
4. Push the **Lower-Member** to the Stop Flow Position



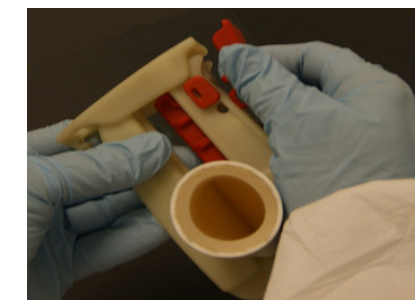
5. Grasp the **Cam-Lever** and rotate it all the way to lock



6. Clamp is fully locked and fluid or gasses are stopped



7. To unlock press both Red **Push-Buttons** simultaneously



8. Sliding your thumb and finger upward to unlock **Cam Lever**

To open HWC clamp start with step 7., 8., then follow step 5., 4., 3., and 2., to release tubing. HWC can be locked on tubing without stopping flow by using the first hook on the Locking Link.

