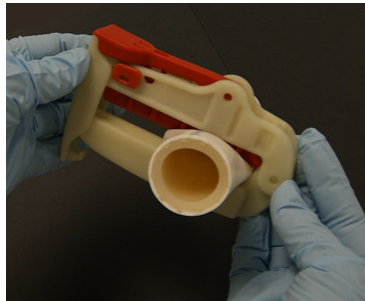


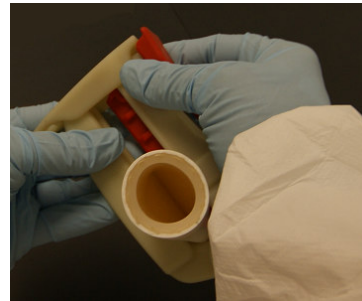
HWC - Quick Start Guide To Open Clamp

The **HWC** (Heavy Wall Clamp) can be used to stop flow of liquids or gases in any flexible tubing. The range of the clamp is **1/16" – 1/8"** wall tubing (**White Gate**) and **1/8" – 1/4"** wall tubing (**Red Gate**). The clamp will accommodate up to 2" OD.

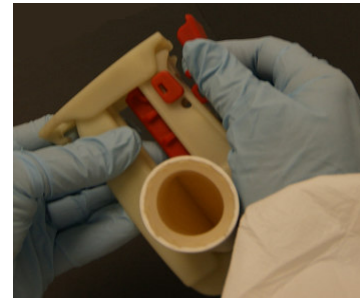
Assembly instructions for the HWC:



1. Starting from the closed position loaded or unloaded



2. Simultaneously press and hold two **Red Push Buttons**



3. Sliding your fingers upward to unlock **Cam-lever**



4. Pull **Cam-Lever** to the rear position as shown



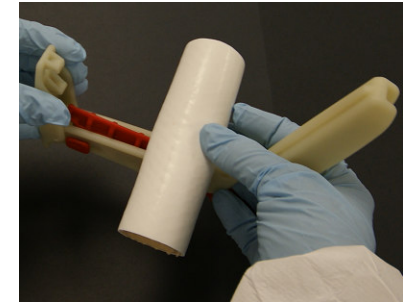
5. Shown from the bottom press and hold **Lower-Member**



6. Pull the **Locking-Link** from the **Lower-Member**



7. The **Lower-Member** is free rotate it up and rearward



8. Proper position to load or unload the tube from Clamp

Reverse steps 1. through 8. to close the HWC onto Tubing, the Red Push-Buttons do not need to be depressed for this operation and Cam-Lever locks in down position.

